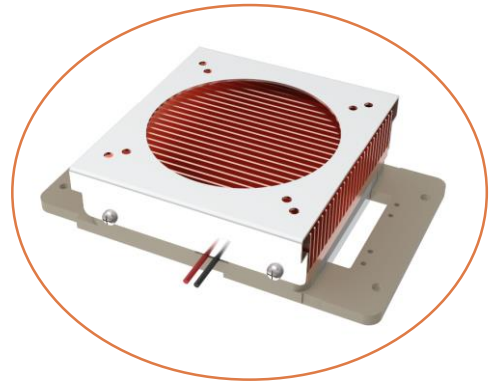
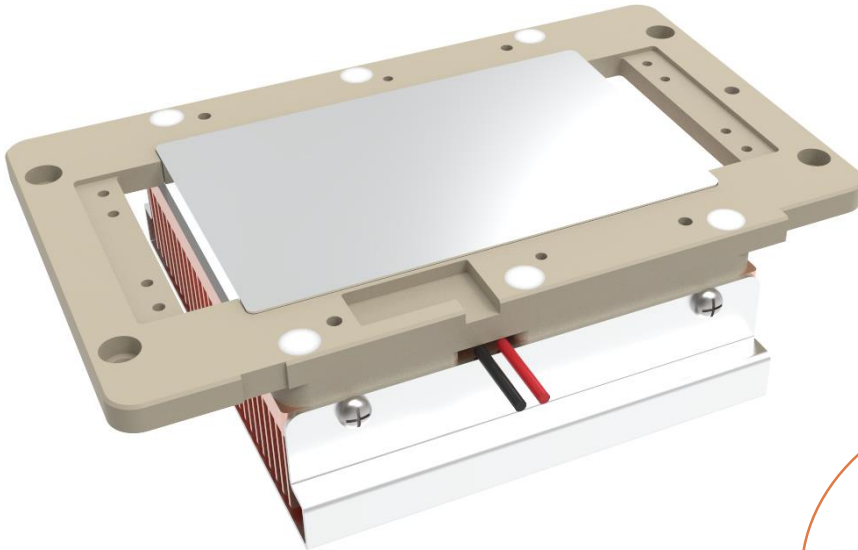


TEF1-050XFA

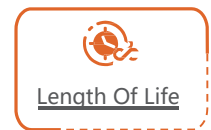
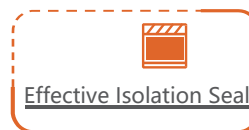
J\`d `Zf e[I Zk f i `8`i \$Zf f Δ[`8jj\`d Yφ



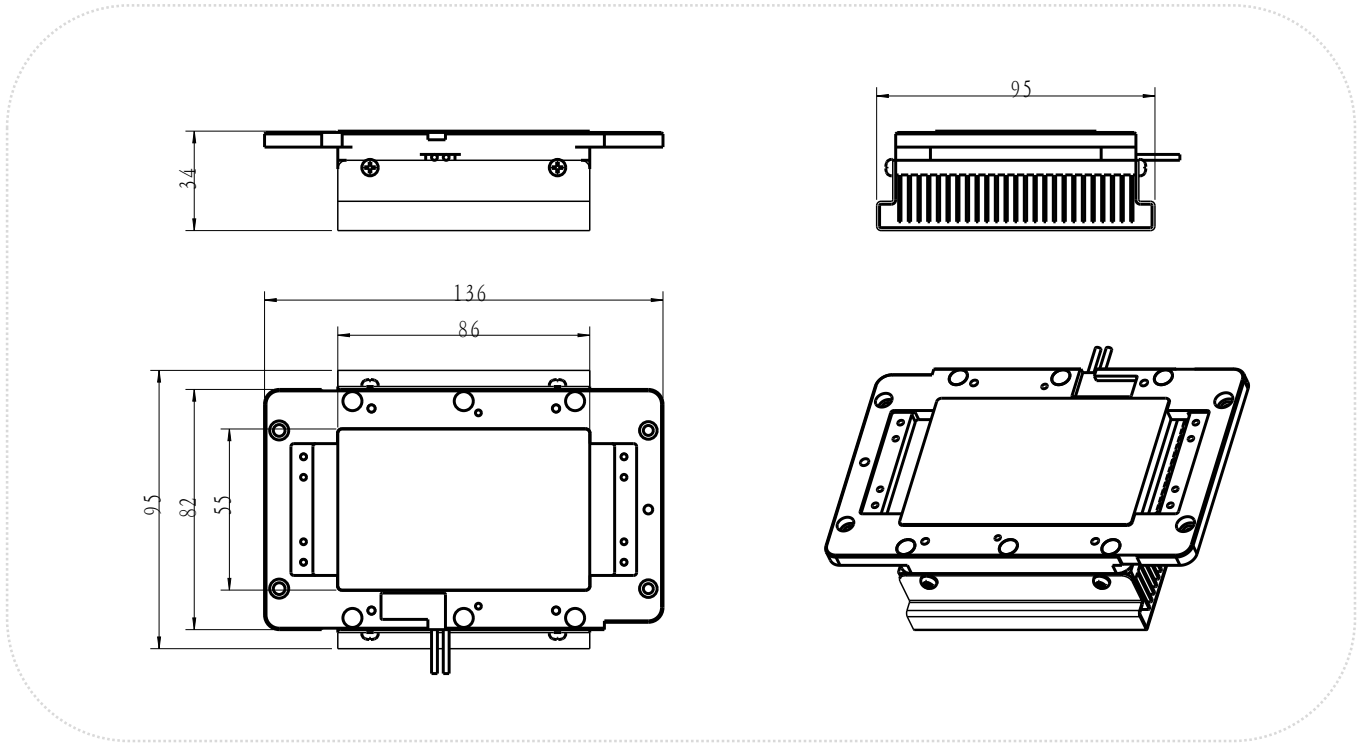
Product Introduction

The semiconductor module of this product provides cooling capability through air cooling and refrigeration using an aluminum block on the cold end, followed by heat exchange with the cooled equipment. It is widely used in medical and beauty devices as well as laser equipment. It features a compact design, small size, and high reliability.




Main Features



Outline Dimensions



Product Parameters

Name	Thermoelectric Cooler Assembly		
Model	TEF1-050XFA		
Operating Voltage (V)	12.0VDC		
Operating Current (A)	5.3A/6.5A		
Cooling Capacity (W)	130W ($\Delta T=0, T_h=50^{\circ}\text{C}$)		
Dimensions (mm, L x W x H)	136x95x34mm		
Operating Temperature ($^{\circ}\text{C}$)	5 $^{\circ}\text{C}$ ~40 $^{\circ}\text{C}$		
Operating Humidity (%)	15%~80%		
Storage Temperature ($^{\circ}\text{C}$)	-20 $^{\circ}\text{C}$ ~60 $^{\circ}\text{C}$		
Storage Humidity (%)	15%~80%		
Net Weight (K)	0.65Kg		
Applications	 Laser/ Numerical Control	 Medical/ Beauty	 Testing