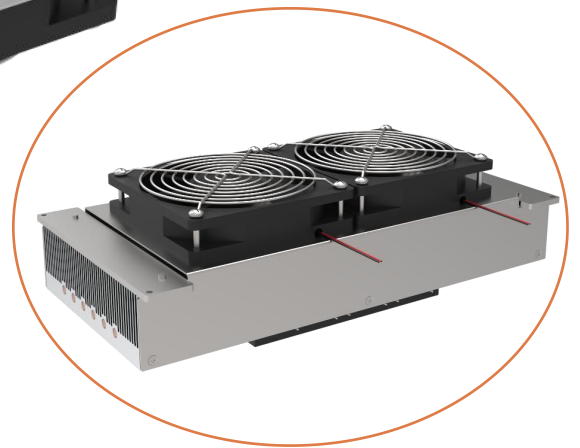


# TP22057

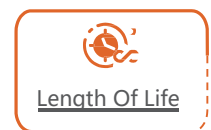
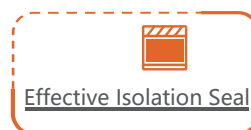
## Thermoelectric Cooler Assembly



### Product Introduction

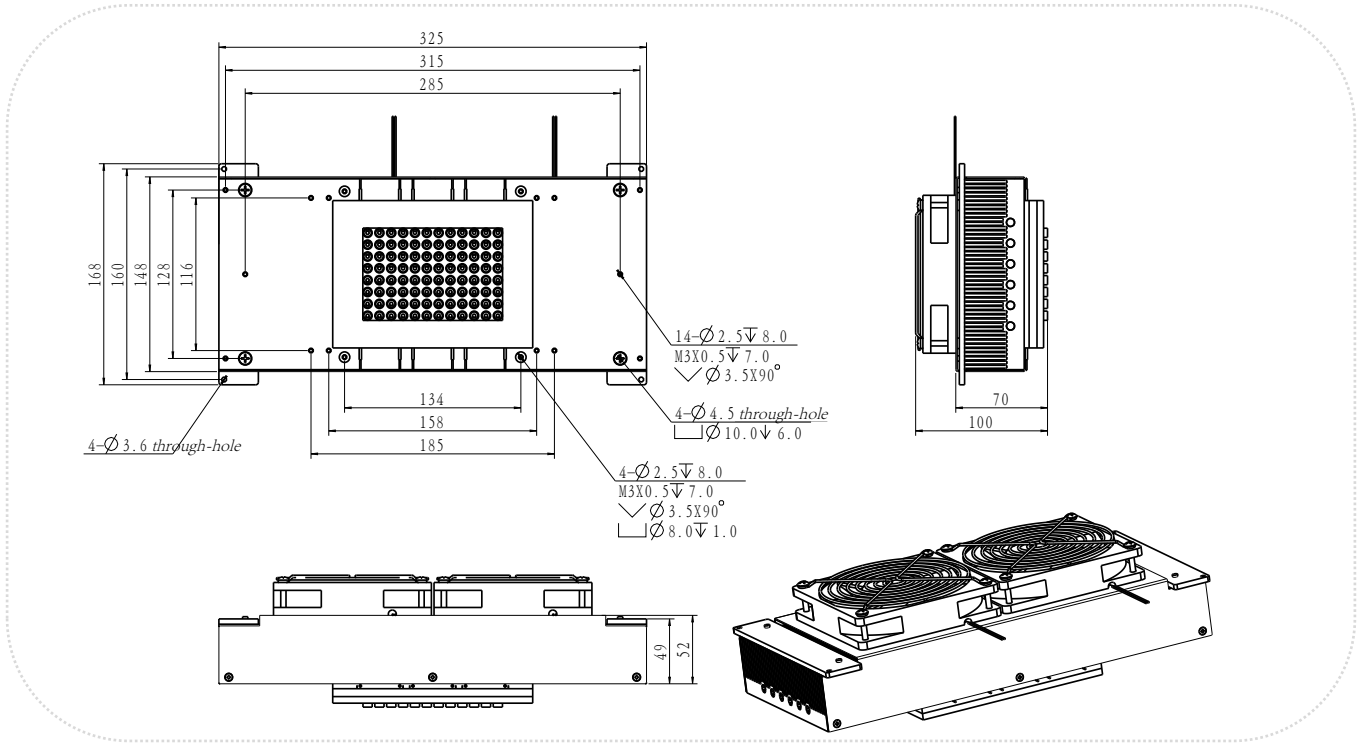
This product is a cooling assembly that provides cooling and heat dissipation by directly contacting the cold plate with the cooling object. The heat is then removed from the hot end through forced air cooling. It is widely used in beauty and medical equipment as well as laser devices. It is characterized by its compact design, small size, and high reliability.

### Main Features



### Shenzhen Huajing Temperature Control Technology Co., LTD

## Outline Dimensions



## Product Parameters

Name	Thermoelectric Cooler Assembly
D f [ \c	TP22057
F g \i X k e ^ M f d X ^ \ (V)	12VDC
F g \i X k e ^ : I i i \ e k (A)	42.5A/52.5A
Temperature Operating Range (°C)	4°C-99°C
Temperature Rise/Fall Rate (W)	≥ 1.5°C/s
Temperature Control Accuracy (°C)	±0.5°C
Fan Rated Speed ( rpm/min )	3600Rpm/min±10%
Noise Level (dB)	≤58dB
; ` d ` e j ` e j (mm, L x W x H)	325x168x100mm
Operating Temperature (°C)	5°C~40°C
Operating Humidity (%)	15%~80%
Storage Temperature (%)	-20°C~60°C
Storage Humidity (%)	15%~80%
Net Weight (Kg)	4.3Kg
Applications	Laser/ Numerical control                      Medical/ Beauty                      Testing